



INTERIM REPORT Indonesia Domestic Biogas Programme

January – June 2015



31 July 2015

Interim Report Indonesia Domestic Biogas Programme

January – June 2015

31 July 2015



Contents

Abbreviations	5
Output Summary.....	6
1. Introduction	9
2. Programme Objectives	11
3. Institutional Setting	13
4. Overview January-June 2015	15
4.1. Expected Result 1	15
4.2 Expected Result 2	18
4.3. Expected Result 3	21
5. Other Relevant Activities	25
5.1. IDBP Carbon Credit Mechanism.....	25
5.2. Kick-starting Gold Standard Agriculture Mechanism.....	25
5.3. W+ Standard.....	26
5.4. Dbase Management Improvement Pilot.....	26
5.5. Market Survey (group 1)	26
6. Challenges and Lesson Learned	27
Annex 1: BIRU Office Addresses	31
Annex 2: Promotion and Marketing Materials	32
Annex 3: List of Construction Partners	38
Annex 4: List of Credit Providers	40
Annex 5: List of IDBP Working Areas (Districts and Subsdistricts)	41
Annex 6: List of Joint Cooperation between Hivos and Government of Indonesia for BIRU constructions	49
Annex 7: List of Meetings and Workshops	50

Abbreviations

ASS	After Sales Service (resulting in partner inspection reports)
BAPPEDA	Regional Planning Bureau
BIRU	Biogas Rumah (Domestic Biogas)
BSM	Bank Syariah Mandiri
BSNI	National Standardization Agency of Indonesia
CLP	Climate Leadership Programme
CPO	Construction Partner Organization
CU	Credit Union Cooperative
DAK	Specific Allocation Fund (Dana Alokasi Khusus)
DGNREEC	Directorate General of New Renewable Energy and Electricity Conservation
DOE	Designated Operational Entity
EnDev	Energizing Development
EUR	Euro
FACET	Finance for Access to Clean Energy Technologies in South and Southeast Asia
GIZ	Gesellschaft für Internationale Zusammenarbeit (Agency for International Cooperation)
Hivos	Humanistic Institute for Cooperation with Developing Countries
IDBP	Indonesia Domestic Biogas Programme
Inkopdit	Induk Koperasi Kredit, Credit Union Central of Indonesia
INSTIPER	Institut Pertanian Instipar (Agricultural Institute)
Kiva	U.S.-based non-profit organization that allows people to lend money via the Internet to low-income / underserved communities
KfW	A bank institutional from Germany
LPO	Lending Partner Organization
MDGs	Millennium Development Goals
MEMR	Ministry of Energy and Mineral Resources
MFI	Micro Finance Institutions
MRV+	Monitoring, Reporting and Verification
NBPSO	National Biogas Programme Support Office
NGO	Non-Governmental Organization
NTB	Nusa Tenggara Barat (province)
NTT	Nusa Tenggara Timur (province)
PBPO	Provincial Biogas Programme Office
PC	Provincial Coordinator
Puskopdit	Pusat Koperasi Kredit, Provincial Coordination Offices of Cooperatives
QI	Quality Inspector
RBF	Rabo Bank Foundation
RNE (Netherlands)	Royal Netherlands Embassy
RNE (Norway)	Royal Norwegian Embassy
R&D	Research and Development
SOG	Standard Operating Guidelines
SNV	Netherlands Development Organization
SME	Small-Medium Enterprise
TOT	Training of Trainers
UNDP	United Nations Development Programme
UNEP	United Nations Environment Programme
VER	Voluntary Emissions Reduction

Output Summary

Start of Programme : 01 January 2015

Reporting period : 01 January 2015 – 30 June 2015

Programme duration at the end of this reporting period: 6 months. This report include activities in East Java which are funded through EnDev Programme.

No.	Output	Achievements	Remarks/target																																																																		
1	Number of digesters produced	Total IDBP digester up to date: 15,031 units Jan-Jun 2015: 812 units Under Norway Embassy: 440 units Under EnDev Programme: 372 units	The BIRU programme receives funds from two donors																																																																		
2	Functioning rate	97%																																																																			
3	No of promotion activities	<p>Community Meeting on biogas awareness and slurry use Total Activities: 108 community meetings, 11 promotion events</p> <p>Total Participants: 8.817 (6.031 men: 68,4% , 2.786 women: 31,59%)</p> <p>Community Meetings</p> <table><tr><th>Province</th><th>Number of meeting</th><th>Number of male participant</th><th>No of female participant</th></tr><tr><td>Lampung</td><td>17</td><td>268</td><td>61</td></tr><tr><td>West Java</td><td>18</td><td>3119</td><td>1809</td></tr><tr><td>Central Java & DIY</td><td>47</td><td>1691</td><td>636</td></tr><tr><td>East Java</td><td>1</td><td>40</td><td>0</td></tr><tr><td>Bali</td><td>2</td><td>18</td><td>17</td></tr><tr><td>NTB</td><td>3</td><td>85</td><td>25</td></tr><tr><td>NTT</td><td>11</td><td>199</td><td>179</td></tr><tr><td>South Sulawesi</td><td>17</td><td>611</td><td>59</td></tr><tr><td>Total</td><td>108</td><td>6.031</td><td>2.786</td></tr><tr><td>%</td><td></td><td>68,4%</td><td>31,59%</td></tr><tr><td colspan="3">Total Male and Female</td><td>8.817</td></tr></table> <p>Event & Participation</p> <table><tr><th>Province</th><th>Number of events</th></tr><tr><td>National</td><td>-</td></tr><tr><td>West Java</td><td>3</td></tr><tr><td>Central Java & DIY</td><td>2</td></tr><tr><td>South Sulawesi</td><td>6</td></tr><tr><td>Total</td><td>11</td></tr></table> <p>Production of promotion and other materials</p> <table><tr><td>Printing materials</td><td>10,617 pcs (brochure, newsletter, roll-up banner, T shirt, kit, etc)</td></tr><tr><td>Internet and mobile based</td><td><ul style="list-style-type: none">Website: biru.or.id 19,794 visitorsTwitter account 593 followersFacebook account 1,650 likes; 1,808 friendsSMS Hotline 17 SMS senders</td></tr><tr><td>Media publication</td><td><ul style="list-style-type: none">Radio promoLocal newspaperOnlineVideo</td></tr></table>	Province	Number of meeting	Number of male participant	No of female participant	Lampung	17	268	61	West Java	18	3119	1809	Central Java & DIY	47	1691	636	East Java	1	40	0	Bali	2	18	17	NTB	3	85	25	NTT	11	199	179	South Sulawesi	17	611	59	Total	108	6.031	2.786	%		68,4%	31,59%	Total Male and Female			8.817	Province	Number of events	National	-	West Java	3	Central Java & DIY	2	South Sulawesi	6	Total	11	Printing materials	10,617 pcs (brochure, newsletter, roll-up banner, T shirt, kit, etc)	Internet and mobile based	<ul style="list-style-type: none">Website: biru.or.id 19,794 visitorsTwitter account 593 followersFacebook account 1,650 likes; 1,808 friendsSMS Hotline 17 SMS senders	Media publication	<ul style="list-style-type: none">Radio promoLocal newspaperOnlineVideo	
Province	Number of meeting	Number of male participant	No of female participant																																																																		
Lampung	17	268	61																																																																		
West Java	18	3119	1809																																																																		
Central Java & DIY	47	1691	636																																																																		
East Java	1	40	0																																																																		
Bali	2	18	17																																																																		
NTB	3	85	25																																																																		
NTT	11	199	179																																																																		
South Sulawesi	17	611	59																																																																		
Total	108	6.031	2.786																																																																		
%		68,4%	31,59%																																																																		
Total Male and Female			8.817																																																																		
Province	Number of events																																																																				
National	-																																																																				
West Java	3																																																																				
Central Java & DIY	2																																																																				
South Sulawesi	6																																																																				
Total	11																																																																				
Printing materials	10,617 pcs (brochure, newsletter, roll-up banner, T shirt, kit, etc)																																																																				
Internet and mobile based	<ul style="list-style-type: none">Website: biru.or.id 19,794 visitorsTwitter account 593 followersFacebook account 1,650 likes; 1,808 friendsSMS Hotline 17 SMS senders																																																																				
Media publication	<ul style="list-style-type: none">Radio promoLocal newspaperOnlineVideo																																																																				

No.	Output	Achievements	Remarks/target
4	No and % of households using credit	7,942 of 15,031 (53%) households total EUR 2,627,593 Jan-Jun 2015: 119 households, total EUR 49,560	
5	No of credit providers (including cooperatives)	24 providers	
6	MFI development	<ul style="list-style-type: none"> Jan-Jun 2015, Nestlé Soft Loan has supported 50 bio digesters construction in East Java. 2 cooperatives in West Java (KUD Puspa Mekar and KPGS) became IDBP Constructing Partner (CPO). Kiva loans supported 97 users in 4 provinces during 1st semester of 2015. IDBP through YRE and Induk Koperasi Kredit/Credit Union established a partnership in June 2015 to develop 1.500 bio digesters. 	
7	Subsidy disbursed	Jan-Jun 2015: EUR 42,143 (Norway Embassy) EUR 41,046 (ENDEV)	
8	No of construction partners	Cooperatives: 14 NGOs: 21 SMEs: 29 Total: 64 CPOs	
9	No of provinces, districts and sub-districts	10 provinces 112 districts 661 sub districts	
10	No of masons & supervisors trained	Total: 1,079 masons and 188 supervisors Jan-Jun 2015: 75 masons and 11 supervisors	
11	No of users trained	Total: 11,201 users Jan-Jun 2015: 868 users (682 male, 186 female)	
12	No of plants inspected by CPOs (ASS = maintenance reports)	Overall: 17,048 inspections Jan-Jun 2015: 3,973 maintenance inspections	
13	No of plants inspected by BIRU staff (during construction and after construction & after ASS/After Sales Service)	Overall: 6,557 inspections a. 572 inspections during construction b. 5981 inspection after construction (4,846 plants already received ASS) Jan-Jun 2015: 383 inspections	
14	Bio-slurry activities	<ul style="list-style-type: none"> a. Bio-slurry trainings Jan-Jun 2015, attended by 962 users (739 males; 223 females). b. Bio-slurry ToT 3 times (1 in Central Java, 2 in South Sulawesi), attended by 7 persons from CPO's management and 7 masons. c. "Soil Sampling" Training in Malang, June 11 – 13, 2015. Attended by 16 surveyors, 3 officials of KAN Jabung, MMO and OFO. d. Soil sampling test in 9 provinces (192 samples (92 users and 92 non users), from 14 May until 2 June 2015. e. Soil sample analysis are conducted in 4 Laboratories in East Java, West Java and NTB. f. Three demo-plots conducted in Central Java. 	Soil sampling campaign within the Climate Smart Agriculture Bio-slurry Project.

No.	Output	Achievements	Remarks/target																						
15	Biogas appliances R&D	<div><div>1.</div><div>The manual instruction book has been published as a guidance to produce a purification appliances.</div></div> <div><div>2.</div><div>Kick off , of the local workshop in Central Java producing appliances (gas tap and water drain) following BIRU standard.</div></div>																							
16	Contribution from Gol	Number of cooperation agreement between BIRU and GOI: 5 Total amount of GOI contributions: EUR 295,293 Total digesters to be built under the cooperation: 705 units.																							
17	Biogas Expertise Centre activity	There is no activity conducted in this first semester by the Biogas Expertise Centre.																							
18	External training and workshop participation	<table><tr><th>Province</th><th>Number of activities</th></tr><tr><td>National</td><td>1</td></tr><tr><td>Total</td><td>1</td></tr></table>	Province	Number of activities	National	1	Total	1	BIRU is participated in the 3 rd Bioenergy Week, in Medan 25 th -29 th of May 2015																
Province	Number of activities																								
National	1																								
Total	1																								
19	External workshops organized	<table><tr><th>Province</th><th>Number of activities</th></tr><tr><td>Lampung</td><td>2</td></tr><tr><td>South Sulawesi</td><td>1</td></tr><tr><td>Total</td><td>3</td></tr></table>	Province	Number of activities	Lampung	2	South Sulawesi	1	Total	3															
Province	Number of activities																								
Lampung	2																								
South Sulawesi	1																								
Total	3																								
20	Internal workshops/ meetings organized	<div>National:</div> <div><div>1.</div><div>PC Meeting, Jakarta, 27-29 May 2015</div></div> <div><div>2.</div><div>“Organic Waste Potential in Indonesia” Panel Discussion in Technical Faculty of Indonesia University, Depok 24 Mar, 2015.</div></div> <div><div>3.</div><div>Local Stakeholder Consultative (LSC) Meeting: IDBP – Gold Standard Agriculture, Jakarta 15 Mar 2015. Attended by 27 participants and 3 speakers.</div></div> <div>Provincial:</div> <div><div>1.</div><div>CPOs meeting in Bali: Integrated Marketing Communication, Denpasar, 20 May 2015</div></div> <div><div>2.</div><div>CPO meeting in Bali: Integrated Marketing Communication, Denpasar, 21 May 2015</div></div> <div><div>3.</div><div>CPO Management Training: 2 times. West Java: 10 – 12 Feb 2015 attended by 2 CPOs and 7 CPO's official; Central Java: Klaten, 26 – 27 March 2015 attended by 3 CPOs and 6 CPO's official.</div></div>																							
21	No of coordination meetings with Gol	<table><tr><th>Province</th><th>Number of activities</th></tr><tr><td>National</td><td>3</td></tr><tr><td>Lampung</td><td>3</td></tr><tr><td>West Java & Banten</td><td>1</td></tr><tr><td>Central Java & DIY</td><td>9</td></tr><tr><td>East Java</td><td>0</td></tr><tr><td>Bali</td><td>1</td></tr><tr><td>NTB</td><td>2</td></tr><tr><td>NTT</td><td>1</td></tr><tr><td>South Sulawesi</td><td>28</td></tr><tr><td>Total</td><td>48</td></tr></table>	Province	Number of activities	National	3	Lampung	3	West Java & Banten	1	Central Java & DIY	9	East Java	0	Bali	1	NTB	2	NTT	1	South Sulawesi	28	Total	48	
Province	Number of activities																								
National	3																								
Lampung	3																								
West Java & Banten	1																								
Central Java & DIY	9																								
East Java	0																								
Bali	1																								
NTB	2																								
NTT	1																								
South Sulawesi	28																								
Total	48																								

1. Introduction

This report is an interim report of the Indonesia Domestic Biogas Programme (IDBP) submitted to the Royal Norwegian Embassy, for the period of January – June 2015. Highlighting the results from the period against the overall target outputs in accordance with the agreement between Hivos and the Embassy. The total number of digesters constructed between 1st January 2015 until 30th June 2015 is 812 units, located in 10 provinces in Indonesia' of which 440 units under the Norwegian Embassy fund, and 372 units under the EnDev Programme fund. Detailed implementation activities are explained in the next chapters.



A Happy family user with biogas lamp in Sumba (NTT)

2. Programme Objectives

Overall Objective

The IDBP proposal presents its overall objective as follows: *"to contribute to economic prosperity, and support the development of a green economy and mitigation of climate change in Indonesia through the scale up of a national domestic biogas sector development programme to improve waste management and emissions reduction in the livestock and dairy sector."*

This means the programme aims to expand the use of bio-digester technology by farmers to improve the waste management leading to reduction of greenhouse gas emission. The emission reduction calculation is conducted through a methodology approved by the Gold Standard Foundation. Proper and effective biogas sector development implies the close cooperation of relevant stakeholders (government, non-government and private sector) at all levels and that those stakeholders are sufficiently equipped to fulfill the necessary respective functions.

The expansion of the biogas adoption by more farmers will create job opportunities in biogas sector (contractors, masons, input suppliers, training institutions and the users themselves) and in the long run will support the protection of ecosystems and biodiversity as well as public health through reduction of indoor air pollution.

Specific objective

To promote the development of a market-oriented domestic biogas sector that provides access to affordable clean energy for livestock and dairy farmers through the dissemination and application of biogas technologies, with support for access to finance and enabling policy environment.



Biodigester construction in West Java

3. Institutional Setting

The Indonesia Domestic Biogas Programme is working on the second phase. This second phase is partially funded by The Royal Norwegian Embassy under a Grant Agreement d.d. 4 December 2013 and an Implementation Agreement d.d. 10 July 2014 with the Directorate of Bio-energy at the Directorate General New Renewable Energy and Energy Conservation under the Ministry of Energy and Mineral Resources of the Republic of Indonesia. In implementing IDBP, Hivos receives technical support from SNV and works directly with a national non-government organization Yayasan Rumah Energi (YRE). Apart from funding from the Norwegian Embassy, IDBP also receives funds from EnDev Programme. The official Indonesia government counterpart of Hivos is the Ministry of Social Affairs.

A National Biogas Advisory Committee was established in July 2011 and the membership officially ended at the end of 2013. The membership is currently being re-considered by both DGNREEC and the programme. The mandate of the Committee is to monitor programme progress and endorse initiatives, the representatives including relevant government agencies, DGNREEC, civil society and the supporting donors. On 8th of July 2015, DGNREEC facilitated a meeting between IDBP and six MEMR provinces agencies, where BIRU plan to be implemented under the funding of MCA-I and Norway Embassy from January 2016 until December 2018. In addition to the existing provinces, there will be three more provinces including Jambi, Southeast Sulawesi and West Kalimantan. In total, the National Biogas Advisory Committee from 2016 onwards will consist of 13 provinces. The first Advisory Committee meeting in 2015 will be undertaken at the end of August 2015.

In 2009 the programme established a National Biogas Programme Support Office (NBPSO) to support the Provincial Biogas Programme Offices (PBPO). The Provincial offices are responsible for local implementation, and are tasked to synchronize and liaise with provincial and district Energy Agencies and cooperate with BAPPEDA (local development planning branches) and other relevant government agencies at provinces and district levels. Other tasks of the PBPO include: biogas promotion, capacity building and development of the biogas sector, quality control, slurry extension and gender mainstreaming.

Through its mandate to develop a market-based and sustainable biogas sector, IDBP has entered into participation agreements with more than 60 construction partner organizations (CPOs) which are groomed to provide high-quality biogas digesters for cattle farmers interested in investing in biogas. The PBPOs provide assistance and have an inspection role in order to ensure quality and continuity in the development of the biogas services in each target region.

By 19 November 2012, as an effort to ensure a local ownership, Hivos established Yayasan Rumah Energi (YRE) and since then has become the only direct implementing partner of Hivos. YRE has a mandate to provide new renewable energy access to households in both rural and urban areas, as well as to support food sovereignty. YRE is gradually taking over the key responsibilities of IDBP. With this change, Hivos and SNV take on a more focused role in managing and supervising the programme and strengthening YRE as an institution. YRE branches in the provinces also serve as PBPOs for IDBP.

4. Overview January-June 2015

4.1. Expected Result 1

3,600 livestock farming households have invested in their own quality assured bio-digester from certified providers, and implement improved waste management practice that reduce the environment and social impacts of production and consumption.

4.1.1. Indicator: 3,600 digesters installed in 6 provinces in line with IDBP standards for construction, appliances, user training, aftersales services and inclusion of women

Target number of digesters to be constructed by December 2015 is 3,129 whereas the midterm target till June was 1,564 digesters. By June 2015, 812 total digesters have been built and operated, or 52% of the target. The main reason for the slow construction is due to many new recruited CPOs, which by this period have just starting their businesses, other reason is due to delays in the cooperation with the government.

By June 2015, the IDBP programme is operating in 112 districts in ten provinces (West Java, Banten, Central Java, Yogyakarta, East Java, Bali, Lombok, South Sulawesi, Lampung and Sumba). A total of 64 CPOs were involved in the construction of these digesters and the quality of the digesters is highly satisfactory: The BIRU annual biogas user survey indicate that more than 97 percent of the digesters are functioning.

Provinces	Target Jan 2015 - Dec 2015	Output Jan-June 2015	Norway-funded	EnDev-funded
Bali	300	72	72	
West Java	300	17		17
Central Java and DIY	600	182		182
East Java	270	173		173
Lampung	165	52	52	
South Sulawesi	824	223	223	
NTB	570	14	14	
Sumba NTT	100	79	79	
Total	3,129	812	440	372
Output %			54	46

Table 1: Target and actual output in 2015

4.1.2. Indicator: At least 30% of participants in community awareness meetings for the promotion of biogas are women

To support the dissemination of the BIRU programme, BIRU has conducted a large number of community meetings and promotional activities. These include the dissemination of information via print and electronic media, printing material (brochures), as well as through seminars or other presentations designed for specific audiences and existing forums.

From January up to June 2015, 108 awareness meetings have been conducted in 10 provinces where BIRU is already established. BIRU has reached 31,59% (2786) women participants from total 8.817 people. Yet, the increment of women participants is only contributed by two provinces (West Java & NTT) which achieve at least 30% women participants. The reason for this high participation rate is a concern of women on maintenance of a system like a digester in these provinces, while men's responsibility is the material fulfillment to run a digester. Meanwhile, other provinces still have the lack of women's participation, mainly caused by cultural norms that still consider meetings and other similar activities belong to the male domain. Also, most of the meetings were conducted in cooperative meeting or farmer group fora of which members are mostly men.



Women promoter in Central Java

4.1.3. Indicator: 100% HH at least one person receives user training; in at least 50% of HH a woman receives user training

A very important factor of a well-functioning biogas digester is how it is being operated and maintained by the user. Therefore the BIRU programme provides training to the user after a digester is constructed. Both male and female adults are invited to participate in the training. From Jan-Jun 2015, 868 users have been trained, 682 male (79%), and 186 female (21%). This number achieved 107% from the targeted indicator, but the participation of women is lower than targeted 30%.

4.1.4. Indicator: 150 masons and supervisors trained and certified in digester construction and maintenance

To ensure the continued operation of all digester installed, the BIRU program applies quality standards. One of the standard is a trained construction worker (masons and supervisors) who were certified through the masons training. The training covered a standard procedure on how to construct a proper digester. From January 2015 until June 2015 around 86 construction workers consist of 75 mason, and 11 supervisor were trained and certified by the BIRU program.

No	Provinces	# Masons	# Supervisors
1	Lampung	0	0
2	West Java & Banten	19	5
3	Central Java & Yogyakarta	29	2
4	East Java	0	0
5	South Sulawesi	1	1
6	Bali	0	0
7	NTT (Sumba)	26	3
8	NTB	0	0
Total		75	11
		86	

Table 2: New Masons and Supervisors period Jan - Jun 2015



Mason refreshment training conducted in NTB

4.1.5.Indicator: At least 65% of HH sell or apply bio-slurry for agriculture or fish rearing in a proper manner; at least 30% of bio-slurry processing/trade is conducted by women

Based on the result of the Biogas User Survey (BUS) 2014, 82% of the biogas users are already using bio-slurry as fertilizer. From this percentage, 84% use it in dried form and 26% in liquid form. In the bio-slurry users training, 23% of the participants are female, and 77% male.

The bio-slurry training activities progress from January to June 2015 has been low due to the slow progress of construction. The reason include; (i) new CPOs in West Java & Banten area have just started building digesters, and have not yet participated in CPOs bio-slurry ToT and (ii) in NTB, CPO's dependency on the government biogas project is high, while GOI construction projects would not start until August-September and finish before December 2015.

So far the project had identified 16 female biogas users in 2 provinces that currently selling bio-slurry.

No	Province	Participants of Bio-slurry Training	
		Male	Female
1.	West Java	7	1
2.	Central Java and DIY	319	41
3.	East Java	380	169
4.	Lampung	24	10
5.	NTB	9	2
Total		739	223

Table 3: Number of participants of Bio-slurry trainings in 10 provinces



Bio-slurry training conducted in Bali

4.1.6.Indicator: 100% of targeted Quality Inspection visits completed (10% during construction; 15% after construction; 5% after ASS visits) and logged on program MIS

Quality Inspector (QI), from the PBPO (Provincial Biogas Program Offices) will visit bio-digester randomly to check the quality during construction, after construction and 9 or 18 months after sales, the CPO (Construction Partner Organization) has an obligation to check 100% of the digester at 9 and 18 months after sales. The main purpose of this activity is to ensure that each digesters constructed meet the BIRU standard, and each digesters is working properly. Also to guarantee that the digesters will continue operated within guaranty phase.

From Jan to June 2015, a total of 383 quality inspection have been conducted, 37 conducted during the construction of the digester and 346 conducted for the digester after constructed. There are 46 ASS quality inspection for the previous year digested also conducted during this period.

Quality Inspection during construction		Quality Inspection after construction		Quality Inspection after ASS period	
Target: 10% Unit	Result Achieved Unit	Target: 15% Unit	Result Achieved Unit	Target: 5% Unit	Result Achieved Unit
81	37	99	346	41	46
	46%		350%		

Table 4: IDBP Quality Inspection (Quality Check) from January to June 2015

4.2 Expected Result 2

The biogas sector is moved from demonstration to replication through increased capacity of existing and new providers to service the sector, with the adoption of product and service standards, quality assurance and monitoring, linkage to finance, and engagement of business intermediaries and partners in sector development.

4.2.1. 20 BSPs have established Participation Agreements and adopt IDBP Standard Operating Guidelines

From January-June 2015, IDBP recruited 13 new partners, and the total number of partners up to date is 64. The new partners had all received mason trainings and technical assistance to start the biogas business in their organization. The process of establishing a partnership between IDBP and a new partner takes two months in average, during that time the content of the Agreement is intensively discussed. Overall, all partners understand the content and agreed to adopt the IDBP standard.

No	Name Of New Construction Partners	Province
1	CV. Bina Energi Mandiri Persada	Central Java
2	CV. H&B Putra Mandiri	Central Java
3	LSPI At-Tayseer	Central Java
4	CV. Nur Indah Karya	South Sulawesi
5	CV. Pratama Butiti Jaya	South Sulawesi
6	CV. Joy	Sumba (Ntt)
7	Lembaga Sosial Waimaringi	Sumba (Ntt)
8	Yayasan Foremba	Sumba (Ntt)
9	Yayasan Harapan Sumba	Sumba (Ntt)
10	Yayasan Satu Visi	Sumba (Ntt)
11	KPGS	West Java
12	KUD Puspa Mekar	West Java
13	Pinbuk Banten	West Java

Table 5: List of New IDBP Partners, Jan-Jun 2015

4.2.2. 20 BSPs have received technical support and capacity building for business and institutional development

The first quarter of 2015 proved to be quite challenging for IDBP. 13 new partners were recruited. The newly recruited partners need an intensive support especially in the marketing and promotion, construction and administrative process. In addition to the 13 partners, 51 existing partners also required intensive assistance and monitoring, especially in the marketing efforts they undertook, as well as access to credit facility. Old and new partners were in areas where credit facility is not available, starting from 2014 have had the opportunity to access loans from Kiva, a micro-finance institution from the U.S. In 2015, IDBP facilitated 7 partners to access the Kiva loans. Details on the partners' access to credit facility is explained on section 4.2.3 below.

4.2.3. 24 local Lending Partner Organizations (cooperatives, BRP, MFI) are linked to credit providers to channel loans for smallholder livestock enterprises.

In total, 24 lending partners of IDBP (see annex 5) are now linked to credit providers such as Nestlé, Rabobank Foundation, Kiva, Credit Union, and other institutions. Since 2010, Hivos has a partnership with Nestlé's CSR Program, conducting a biogas credit financing for milk suppliers in East Java. Under this partnership, Nestlé provides low-interest loans to dairy farmer members of Nestlé dairy cooperatives partners, which are BIRU construction partners (CPOs) and lending partner organizations (LPOs). In January-June 2015, Nestlé interest-free loan had supported 53 farmers to construct bio digesters. The loan that has been disbursed during January to June amounted to IDR 323,340,775 (EUR 21,920.18).



Kiva field visit in Central Java

The partnership with Rabobank Foundation (RBF) which started in 2014, has supported 1 102 farmers to access credit for biogas. The total amount of disbursed loans are IDR 4,988,911,000 (EUR 338,132.68). From January to June 2015, the loans from RBF has supported 15 farmers with the amount of IDR 94,929,000 or EUR 6,435.5. The loans are channeled from Rabo Bank International Indonesia to selected cooperatives directly. Most of the RBF Lending Partners are dairy cooperatives.

During January to June 2015 period, two of RBF partner cooperatives in West Java, the KUD Puspa Mekar and Koperasi Peternak Garut Selatan (KPGS) have become IDBP Constructing Partners (CPO). These two cooperatives had received biogas loan funding amount of IDR 650,000,000 or EUR 44,054.95 with 5 year repayment period and interest rate 8% p.a. By becoming CPOs, it will be easier for IDBP for coordinating and monitoring process of the biogas sector development at West Java Province.

In June 2014, IDBP through Yayasan Rumah Energi (YRE) officially partnered with Kiva. Kiva is a U.S. based non-profit organization that allows low-income/underserved entrepreneurs lend money via internet in more than 70 countries. Since it launched on September 2014, IDBP through YRE had disbursed Kiva biogas loan through 2 CPOs in Central Java, 2 CPOs at NTB, 1 CPO at Lampung and 1 CPO at Jogjakarta and 1 CPO at South Sulawesi Provinces. The total supported farmers to install bio digester are 122, with total loan of IDR 652,500,000 (EUR 44,237.2).

During January to June 2015, the demand of Kiva loan has increased significantly. 97 farmers in 4 provinces were assisted to construct biogas with total loan disbursed EUR 21,067.81. While during September to December 2014, Kiva loan only supported 25 users with a total loan disbursed EUR 7,118.63. Kiva loan repayment runs with no report of non performing. The repayment methods as preferred by biogas users are monthly, by 3 months and by 4 months. The last two repayment methods are based on harvest time, called "Yar-nen" (pay when harvest). Loan disbursed in first semester of 2015 are detailed in the table below:

IDBP Work Area	Kiva Borrower	Loan Issued	
		IDR	EUR
Central Java	17	102,000,000	6,838.53
Lampung	29	174,000,000	11,665.73
NTB	41	236,500,000	15,856.00
Jogjakarta	10	38,000,000	2,547.69
Total	97	550,500,000	21,067.81

Table 6: Kiva loans disbursement, Jan-Jun 2015

In 2015, IDBP is seeking for Kiva loans that is expected to support 935 potential borrowers in 8 existing IDBP provinces with value of EUR 356,609.44. The loans is plan to be disbursed to bio digester constructions and bio slurry home industry related businesses. Recently, IDBP through YRE is participating in Kiva due diligence process to ensure IDBP is feasible for loan disbursement of USD 200,000 credit ceiling (EUR 175,254.12). The due diligence process is expected to be completed in early August 2015.

Apart of these existing credit sources, in 2015 IDBP through YRE has signed a MoU with Inkopdit (Central of Credit Union Indonesia). Through this partnership, IDBP and Inkopdit will be able to help Credit Union members develop 1,500 bio digesters and bio slurry related business in the next two years. Inkopdit through their Provincial Puskopdits have networks of hundred Credit Union cooperatives in 32 provinces. The cooperation is expected to be one of biogas credit solution in IDBP plan to expand into new provinces.

4.2.4. 100 entrepreneurial operations established and active in the processing and sale of bio-slurry; at least 30% of bio-slurry operations are run by women

The project had identified five vermin composting business group is East java, one of the group consisted of 68

members, there are also group of vermin composting business identified in West Java consisted of 10 women, one vermin compost entrepreneurs in Central Java consisted of 5 members, other identified entrepreneurs in East Java (2), Lombok (2 (1 – Woman)), Sumba (3) and South Sulawesi (4) producing and selling liquid and dried bio-slurry. So far only 16 female entrepreneurs identified located in Central and West Java. Based on this data, there are less than 30% of bio-slurry processing or selling conducted by women. The reasons include: (i) in most provinces, users of the bio-slurry were mainly male who used to be responsible for agriculture input, and (ii) women participation in bio-slurry training is low, which is only 23% because of the current social culture value, as almost in all provinces there is a pattern that men were prioritized for a training opportunity, while women is responsible for domestic issues such as food preparation and children rearing. The concentration of women business activities are mostly in West Java and Central Java. There are 10 women participate in the vermin-compost business in West Java, and 5 female entrepreneurs in Central Java. The vermin and compost production, produce a “mature stock” as part of fish fodder mixture, and compost to be sold as an organic fertilizer. In Central Java, the women produce liquid fertilizer, using quail’s bio-slurry. The bio-slurry business is possible as (i) the site location is near the houses so it is easy for the women to taking care their children, (ii) the technology for producing liquid organic fertilizer and composting is easy and simple, and (iii) the production cost is low.

4.2.5. Local foundation YRE is recognized by government as a core actor in biogas sector development in Indonesia

During the first six months of 2015, YRE gained more recognition from the Indonesian Government. YRE was invited as a local biogas actor to speak in national and international forum, such as the Bioenergy Week Forum, in May 2015. In addition to that, especially the provincial government under MEMR, have become more aware about the roles of YRE within the BIRU Programme. DGNREEC in a few meetings with Hivos also started to talk about the more significant roles of YRE in the BIRU Programme. During this report period, BIRU is in the process of creating a business model with YRE, which is to be proposed to DGNREEC by August 2015.

4.2.6.5 new biogas appliance designs are developed, tested and certified for use.

Up to date, four (4) new biogas appliance designs were developed by IDBP: Sulphur purification filter, stove, gas tap and water drain.

The sulfur filter is a purifier tool that aim to reduce the level of H₂S (Hydrogen Sulfide) and CO₂ (Carbon Dioxide) that is contained in biogas. To make this appliance functioned well, each CPO (Construction Partner Organization) must have the knowledge on how to produce this tool, hence in the first semester of 2015 IDBP, has made a manual as a guide to produce this purifier tool.

IDBP also develops other appliances called gas tap and water drain, these appliances are placed on the digester pipe installation, BIRU program has started cooperation with local home industry in Central Java in early February 2015. The planning is to establish a small workshop to produce a good quality gas tap and water drain.

4.3. Expected Result 3

Establishment of enabling policy environment for a sustainable biogas sector, through the development of new funding models for government interventions, standardization of biogas appliances, and establishment of a Domestic Biogas Expertise Centre

4.3.1. Two (2) biogas appliance designs (e.g. stove, lamp) are standardized and registered by the Indonesian government

Biogas appliances improvement and testing was continued in this period. 4 types of stoves were tested by Institute Technology Sepuluh November, which were found to have more than 50 % efficiency. This criteria meets the Indonesian Government national standards that are stated in the National Standard of Indonesia (SNI 7368:2011) used for thermal efficiency level. Based on the efficiency results, competitive price and attractive looking, these stoves are recommended for user, however continued monitoring on the performance will be carried out, including through bi-annual Kitchen Performance Tests (KPT).

4.3.2. National and/or local governments allocate funds to support market-based domestic biogas dissemination

In the first semester of 2015, provincial government of West Nusa Tenggara and South Sulawesi have made a commitment to allocate a total of EUR 295,293 (IDR 4,134,102,908), to support domestic biogas. With the fund, 705 farmers will get access to BIRU digesters. Some of the provincial & district government use co-financing mechanism where farmers and BIRU are still contribute to the total price of a digester. However, some local governments are still unwilling to apply the system due to the nature of the funding sourced from the State Budget which does not allow to be used as a matching fund. The details of the allocated funds from the government is explained below.

No	Government Body	Allocated funds	Targeted constructed units
1	Provincial Energy Departments Ministry of Energy and Mineral Resources Lombok Utara 2015	EUR 128,214 (IDR 1,795,000,000)	422
2	Mining and Energy Agencies Barru District South Sulawesi 2015	EUR 43,628 (IDR 610,788,750)	67
3	Natural Resource Management Agencies Ministry of Energy and Mineral Resources Wajo South Sulawesi 2015	EUR 42,743 (IDR 598,398,158)	65
4	Maros District Government South Sulawesi 2015	EUR 42,185 (IDR 590,590,000)	71
5	Bantaeng District Government South Sulawesi 2015	EUR 38,523 (IDR 539,326,000)	80
TOTAL		EUR 295,293 (IDR 4,134,102,908)	705

Table 7: GoI Allocated Funding For Biogas

4.3.3. Establishment and functioning of a Domestic Biogas Expertise Centre

A Biogas Expertise Center was established under the Ministry of Energy and Mineral Resources and SNV Senior Advisor was providing training to the staff of the Department. It was continued till the end of 2014 where more than 15 staff of department got acquainted with biogas technology, biogas use, standardization, quality control system, appliances testing and designs, bio slurry utilization and biogas promotion and marketing. As ministry staff are too busy in 2015 and regular training was difficult to manage, it was decided to organize such training only as and when necessary. However, necessary inputs and advices are provided as per request of the Ministry particularly in regards to appliances standardization, carbon financing mechanism and bio-slurry utilization.

4.3.4. National and local government, private sector and civil society engage actively in coordination of domestic biogas sector development, attending at least one regional or national coordination meeting annually

The coordination at the provincial level was conducted between March – May 2015, where 7 of IDBP provincial teams conducted stakeholder meetings to report on the progress in each provinces. In addition to that, the IDBP management from the National office, attended 4 meetings at provincial and district levels. In August 2015, a National Biogas Advisory meeting will be conducted.

5. Other Relevant Activities

5.1. IDBP Carbon Credit Mechanism

IDBP is registered under a Voluntary Gold Standard Programme of Activities for the carbon credit mechanism (PoA ID GS 1172, VPA-1 ID GS 1174). This year, the second monitoring and verification activity is being done to calculate the emission reductions realized from the digesters that were built from 1 June 2013 to 31 December 2014. The monitoring process is assisted by Climate Focus, a Dutch consulting company based in the Netherlands, and was verified by a Designated Operation Entity (DOE) from TuV Nord, based in Malaysia.

During this process, a field visit was conducted in Bandung, West Java by IDBP team, Climate Focus and the DOE on April 2015. Households were visited, after which the DOE submitted his comments about the BIRU programme that needed to be answered. That process was finished by the end of May 2015, and the draft of Monitoring Report and request for issuance of the carbon was already submitted to the Gold Standard in mid-June 2015, and should take up to 4 weeks to get a response from them. It is expected that during this monitoring period, the emission reductions realized from cumulative number of 14,139 BIRU bio-digesters will be 54,059 tCO₂e.

5.2. Kick-starting Gold Standard Agriculture Mechanism

A feasibility study on "Climate Smart Agriculture" in bio-slurry usage within the biogas user and non-user farmland was conducted by Hivos and Soil&More International B.V (SMI) in January 2014. It was the first step of carbon credit requirement of Gold Standard Agriculture (GSA). Then the 2nd step was for Hivos to conduct the Local Stakeholder Consultative (LSC) Meeting: IDBP – Gold Standard Agriculture, which was held in Jakarta on March 15, 2015 and was attended by 27 participants and 3 speakers. The 3rd step that IDBP did was to conduct soil sampling in 9 provinces of IDBP working area May 14 – June 2, 2015. After taken the soil from the user and non-user biogas, the soil are sent to the 4 selected-labs for nutrient and physical analysis. The 4th step, IDBP will send the soil sample test report to SMI in order to be analyzed and together Soil and More to register the programme under the Gold Standard Agriculture carbon mechanism.

5.3. W+ Standard

In November 2014, Hivos started out an initiative to measure more impacts of biogas on women. Hivos worked together with Women Organizing for Change in Agriculture & Natural Resource Management (WOCAN). Wocan has developed a unique certification label, the W+ Standard, that endorses projects that create increased social and economic benefits for women participating in economic development or environment projects. These include those that provide renewable energy technologies, time and labor saving devices, forest and agriculture activities, and employment opportunities. The W+ framework quantifies and monetizes the social capital created by women, to recognize and reward their contributions to sustainable environments and communities. There are six domains that are covered in this standard:

1. Time saving,
2. Income and asset,
3. Food security,
4. Knowledge and education,
5. Health, and
6. Leadership

The activities consist of three parts; the first part was an assessment to see the level of viability of the W+ in the context of the Indonesia Biogas Development Project (IDBP), with the goal to develop a Project Design Document for measuring the time savings generated for women through adoption of biogas. From this assessment, it was found out that the amount of time saving by women who use BIRU is 1.5hrs per day/household, or a total of 2,500,000 W+ units. The assessment was carried out from 16 to 22 November.

The second part of the exercise is the monitoring period by Wocan in February 2015, to determine the roles of women and men in the management and operation of biogas and to determine if there is differential access to resources (e.g. loans and services) related to biogas technology. This was followed by the identification of opportunities in existing project activities that could be built upon to generate pathways to other W+ domains beyond the Time Domain. Local savings and loans schemes were also identified to explore the potential for a benefit sharing mechanism that would be needed for the direct share payments that would accrue from the sale of W+ units in the future. The third part of the activities is to have the BIRU-W+ adoption validated by a W+ auditor, also to ensure that there is a benefit sharing mechanism that can be applied in within the project. The last activity was conducted from 6-7 July 2015. It is expected that IDBP will be registered under W+ Standard by the end of August 2015. The next steps will be to conduct a marketing exercise to sell the Time-saving units to generate income for the Programme, and be channeled into women groups as a revolving funds for productive income-generating activities, starting in 2016.

5.4. Dbase Management Improvement Pilot

In 2014, IDBP was elected as one of the programmes to get MRV+ pilot project from KfW (a bank institution from Germany) and Hivos Head Office. After pilot project phase that used in one our CPO, in 2015 we tried to evaluate the benefit and challenges of using MOGLI (the mobile application for MRV+). Based on the evaluation, IDBP wants to upscale MOGLI to all provinces as part of database management improvement. But first IDBP has to resolve the challenges. This will be done in the second semester of 2015.

5.5. Market Survey (group 1)

In cooperation with the DGNREEC as well as with the upcoming Millenium Challenge Account Indonesia (MCA-I) programme, a plan to expand IDBP to other provinces will be initiated at the end of 2015. The long-term expected expansion areas for IDBP programme will be 7 new provinces.

In order to support the expansion of programme areas, the IDBP programme, led by Hivos and YRE planned to conduct market surveys in 2 groups. During January to April 2015, IDBP has conducted market survey into 7 new provinces, such as Jambi, Sumatra Barat, Sulawesi Barat, Sulawesi Tenggara, Kalimantan Barat, Kalimantan Tengah and Kalimantan Utara. In the fieldwork, the market survey were conducted by a hired consultant, who managed a team of enumerators, which have to assess the feasibility and market development for domestic biogas programme. In these areas, the survey activities were focused on beef cattle, pigs, or chicken, depending on specific local potentials, and also matching with MCA-I priority areas. And this market survey also covered areas that received DAK funds from DGNREEC programme and thus are perceived potential to be linked up for BIRU programme's expansion, such as local MFIs or other financial institutions.

Based on first market survey result, IDBP decided to expand the programme into 3 new provinces, i.e. Jambi, Kalimantan Barat and Southeast Sulawesi.

6. Challenges and Lesson Learned

6.1. Women and Bio-slurry Income Generating Activity.

IDBP needs biogas credit financing partners who have the same vision in community development. A partnership between Yayasan Rumah Energi through IDBP and Kiva shows that kind of common vision. IDBP must develop the Kiva loan scheme not only for biogas construction, but also in bio-slurry utilization as home industry for biogas users in remote areas.

In most of the 10 provinces that IBP is working at, bio-slurry activities are usually done by male users. A few female users are keen to do the bio-slurry activities both in farmland and as home industry as part of income additional. The number of female users that are involved in bio-slurry usage in the field are West Java (10 female users) and Central Java (5 female users).

Increased female participation is not only pushed related to training, but they should also be more involved in empowering activities. The challenges include (i) how to change the mind-set that female/women can be involved in the bio-slurry usage and business activities, (ii) how to change the socio-culture within users regarding women helping family income and work around their house, (3) to recruit a gender specialist to be involved in the bio-slurry activities.

6.2. Creative way to prevent Non Performing Loan.

IDBP CPOs have realized the risk in executing Kiva loan, so in order to prevent Non Performing Loans, they developed a prevention method. Those methods which are done by LKM, YM3S and LPPNU are placing the staff in borrowers group, creating a saving account for installment and collecting bio-slurry from each Kiva borrower to create bio slurry related businesses.

6.3. Communication and promotion activities:

Dissemination of information in provinces where BIRU is operated, still remains a priority activity to promote awareness. Hence, there are two issues to be improved include:


- (i) Meeting documentation, include minutes of meeting, consistent participants' registration, need to be conducted and documented systematically by the IDBP partners to gain better data of events.
- (ii) The promotion or awareness session reporting 8,817 people participated, while there were 812 digesters built. With better promotion material and activity, result could be improved.

Annex

Annex 1: BIRU Office Addresses

No	Province	Address	Phone and Fax
1	Jakarta	Jl. Ampera IV Gg. H. Rais no. 1, Jakarta 12550	Ph : +62 21 7821090 +62 21 7821086 Fax : +62 21 7808115
2	West Java	Jalan Tanjidor No 19 Turangga, Bandung Jawa Barat	Ph/Fax : +62 22 7308287
3	Central Java	Jl. Diponegoro no 17 RT 005 RW 009 Karang Anom Klaten Utara 57437, Jawa Tengah	Ph Fax : +62272-325968
4	East Java	Jl. Bunga Monstera 21, Kelurahan Tulusrejo, Kec Lowokwaru, Malang, 65119	Ph : +62 271 -486737 Fax : +62 271 471053
5	Bali	Jl. Jata No.4 Gianyar. Gianyar Bali	0817 356 028
6	NTB	Jl. Kebyar Nomor 7 Mataram, Mataram - Nusa Tenggara Barat	Ph/Fax : +62 370 630580
7	South Sulawesi	Jl. Todopuli Raya Timur Kompleks Villa Surya Mas Blok E/03 Kel. Borong Kec. Manggala Kota Makassar - SULAWESI SELATAN	Tlp/Fax : +62 411 831044
8	Lampung	Perumahan Bumi Puspa Kencana 3 Estate, Blok A No. 2, Rajabasa, Bandar Lampung	Ph : +62721-801 2903
9	Sumba NTT	Jln Palapa no 31 matawai Kecamatan kota waingapu - Kabupaten Sumba Timur, Nusa Tenggara Timur	Tlp/Fax : +62387- 61865

Annex 2: Promotion and Marketing Materials




Bio-Slurry

Bio-slurry atau ampas biogas merupakan pupuk organik berkualitas tinggi hasil fermentasi anaerobik (tanpa oksigen). Mempunyai bentuk cair dan padat.


Keunggulan bio-slurry:

1. **Pembenah lahan (*soil conditioner*)** karena mengandung 10 - 20% asam humat
2. **Bernutrisi lengkap dan berkualitas tinggi**
3. **Bio-aktivator mikroba pro-biotik** dan sumber pakan cacing tanah
4. **Pengatur pertumbuhan (hormon)** tanaman
5. **Dapat bersifat sebagai insektisida dan fungisida organik**
6. **Bahan campuran yang baik untuk:**
 - Pupuk vermikompos dan pupuk bokashi
 - Media jamur
 - Pupuk kolam ikan dan belut
 - Pakan ikan dan belut

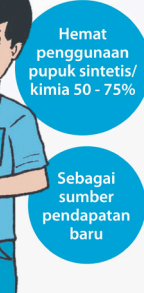
**Lahan Subur Panen Melimpah
Peternak & Petani Lebih Berdaya!**




Peningkatan panen pertanian 10 - 30%



Hemat penggunaan pestisida atau fungisida sintetis/kimia 50 - 75%




Hemat penggunaan pupuk sintetis/kimia 50 - 75%



Sebagai sumber pendapatan baru

Kerjasama Pemerintah Indonesia dengan Endev serta Pemerintah Indonesia dengan Kedutaan Besar Norwegia



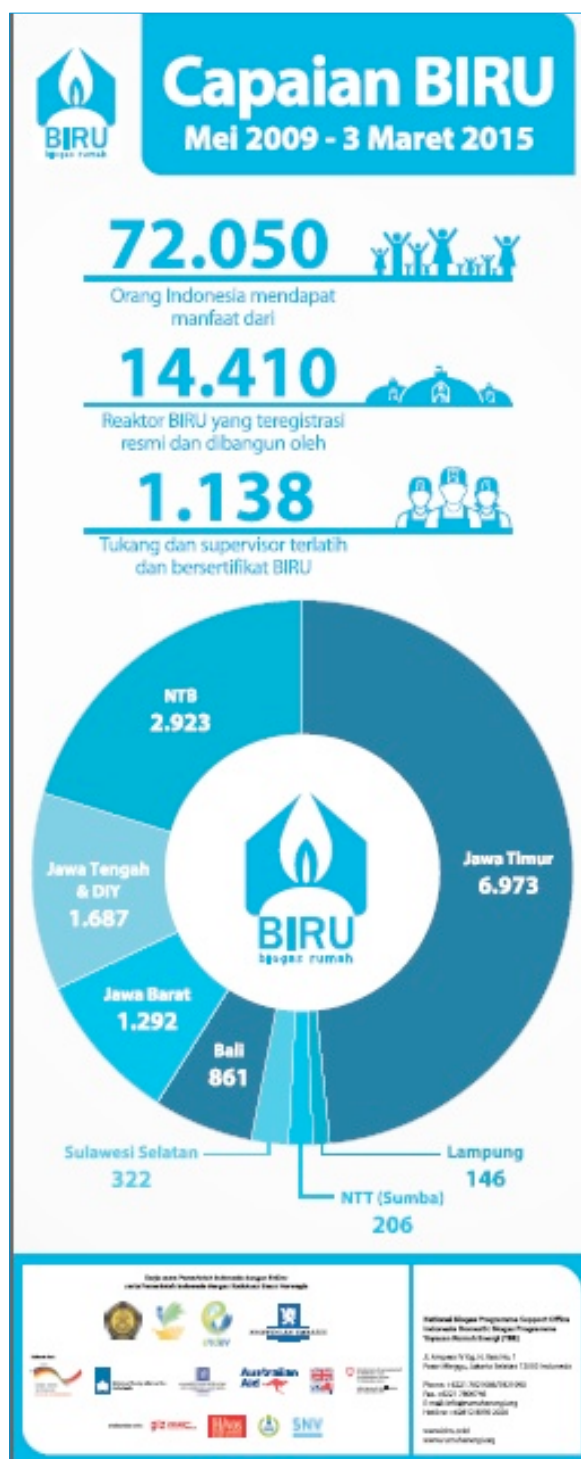
**National Biogas Programme Support Office
Indonesia Domestic Biogas Programme
Yayasan Rumah Energi (YRE)**

Jl. Ampara IV Gg. H. Rais No. 1
Pasar Minggu, Jakarta Selatan 12550 Indonesia

Phone: +6221 7821086/7821090
Fax: +6221 7800746
E-mail: info@rumahenergi.org
Hotline: +62812 8030 2020

www.biru.or.id
www.rumahenergi.org

Roll-up banner of Bio-Slurry



Roll-up banner of BIRU Achievement 2009 – 2015



Program BIRU

Program Biogas Rumah (BIRU) telah dimulai sejak 2009 dan saat ini program BIRU bekerja di Jawa Barat, Jawa Tengah, DI Yogyakarta, Jawa Timur, Bali, NTB (Lombok dan Sumbawa), NTT (Sumba), Sulawesi Selatan dan Lampung.

Program ini dikelola oleh Hivos dengan dukungan teknis dari SNV dan didanai oleh Pemerintah Norwegia dan program ENDEV. Hivos bermitra dengan Yayasan Rumah Energi dalam melaksanakan program BIRU.



● Kantor Pusat
● Kantor Provinsi

Apa itu Biogas?

Biogas adalah gas alami hasil fermentasi antara campuran air dan kotoran hewan ternak sapi, kerbau, babi, unggas (ayam dan puyuh) di dalam reaktor biogas.

Memakai biogas terbukti:

- Lebih ekonomis: Pabrik gas dan pupuk pribadi bisa didapatkan dengan biaya murah. Pupuk dari bio-slurry (ampas biogas) bisa menjadi sumber pendapatan baru.
- Bio-slurry membuat lahan lebih subur, tanaman sehat dan panen melimpah.
- Lebih bersih, sehat dan modern: Dapur dan kandang ternak lebih bersih dan sehat, serta bebas asap yang mengganggu kesehatan.
- Menjaga kelestarian lingkungan.

Keunggulan Program BIRU

- Subsidi 2 juta rupiah per unit reaktor
- Reaktor berstandar SNI 7826:2012
- Garansi dan perawatan purna jual: BIRU memberikan garansi alat 1 tahun dan garansi bangunan reaktor 3 tahun.
- Reaktor tahan lama dan mudah dipelihara: Reaktor dengan konstruksi beton yang dibangun oleh BIRU dapat bertahan hingga 15 tahun bila digunakan dan dirawat dengan baik.
- Profesional: Para pekerja konstruksi terlatih dan bersertifikasi BIRU.
- Tersedia dalam berbagai ukuran (4m³, 6m³, 8m³, 10m³ dan 12m³)




Folded Brochure BIRU: 1.000 pcs (Distributed in Lampung & South Sulawesi)

Keunggulan BIRU


 Bersubsidi


 Reaktor berstandar SNI 7826:2012


 Perawatan purna jual serta garansi alat 1 tahun dan garansi bangunan reaktor 3 tahun


 Reaktor mudah dipelihara dan dapat bertahan hingga 15 tahun bila digunakan dan dirawat dengan baik


 Dikerjakan secara profesional oleh pekerja konstruksi terlatih dan bersertifikasi BIRU


 Tersedia dalam berbagai ukuran (4m³, 6m³, 8m³, 10m³ dan 12m³)

* disesuaikan dengan kebutuhan memasak perhari dan jumlah ternak

Tertarik untuk membangun BIRU? Hubungi kami!

Kantor Yayasan Rumah Energi Sumba NTT
 Jl. Ikan Hiu Sampang TK Mutiara Perumnas
 RT 41 RW 07, Kambajawa, Kecamatan Kota Waingapu,
 Nusa Tenggara Timur
 Telp. 0387-2564534

Contact Person:
 George Malchisua Manu 0812 1379 1704
 Rambu Lawa Anamburu 0821 4375 8110

www.rumahenergi.org | www.biru.or.id

Biogas Rumah | biruidbp

Mitra BIRU

Kerjasama Pemerintah Indonesia dengan Kedutaan Besar Norwegia





Olah Limbah Jadi Berkah

Pakai Biogas: Lebih Hemat Banyak Manfaat!

Leaflet Sumba: 500 pcs (Distributed in Sumba)



Yayasan Rumah Energi adalah organisasi lokal yang didirikan pada 2012 dengan misi memfasilitasi penyediaan akses energi baru terbarukan bagi masyarakat Indonesia di wilayah rural serta mendorong kemandirian masyarakat terhadap ketahanan pangan dan energi. Melalui program Biogas Rumah (BIRU) yang diinisiasi Hivos dan SNV serta bekerja sama erat dengan Kementerian ESDM dan dukungan dana dari para mitra, Yayasan Rumah Energi menjadi salah satu aktor pendorong terbentuknya sektor biogas berbasis komersil di Indonesia.



Kiva adalah lembaga internasional yang mempunyai misi menghubungkan orang-orang melalui pinjaman, untuk mengentaskan kemiskinan. Didirikan pada 2005, Kiva berkomitmen kuat untuk melayani kebutuhan masyarakat kurang mampu, rentan dan/atau terpinggirkan, baik melalui jasa keuangan atau dengan menggunakan kredit untuk memperluas akses ke produk dan layanan yang bermanfaat bagi kelompok masyarakat tersebut.

Nilai lebih pinjaman KIVA adalah:

- ✓ Pinjaman dari KIVA berbunga ringan
- ✓ Tanpa jaminan yang memberatkan
- ✓ Menjangkau kelompok masyarakat yang cukup luas
- ✓ Kisah dan profil peminjam yang sukses dapat dibaca/diakses oleh berbagai orang di seluruh dunia.

www.kiva.org



BIRU Biogasnya, KIVA Pinjamannya

Brochure KIVA: 500 pcs (distributed in Central Java)

Program BIRU (Biogas Rumah) mendukung penerapan energi terbarukan (**renewable energy**), untuk kalangan rumah tangga di wilayah pedesaan. Dengan kehadiran BIRU, peternak ataupun petani tak hanya mendapatkan manfaat gas untuk memasak dan penerangan, namun juga manfaat lainnya yaitu ampas biogas atau **bio-slurry**. Sejalan dengan moto BIRU "OLAH LIMBAH MENJADI BERKAH", jika dikelola dengan baik, bio-slurry bisa memberikan keuntungan lebih bagi peternak ataupun petani.

Keuntungan dari **bio-slurry** antara lain:

- Peningkatan pendapatan
- Peningkatan kesuburan lahan pertanian
- Peningkatan kualitas serta kuantitas panen tanaman budi daya
- Sebagai pupuk kolam dan campuran pakan ikan, belut, cacing tanah, ternak dan unggas.

Informasi lebih lanjut:
Kantor Pusat BIRU - Indonesia Domestic Biogas Programme
Yayasan Rumah Energi (YRE)
 Jl. Ampas IV Gg. H. Rais No.1 Jakarta 12550
 Telp. +6221 7821086/ 7821090 | Faks. +6221 7806746
 Hotline: +62812 8030 2020
 Email: info@rumahenergi.org
www.rumahenergi.org | www.biru.or.id

Kantor BIRU Provinsi

Mitra BIRU



**Bio-Slurry:
Manfaatnya Segudang!**

Kerja Sama Pemerintah Indonesia dengan GIZ dan Kerja Sama Pemerintah Indonesia dengan Kedutaan Besar Norwegia



Didukung oleh: 

Brochure Bio-Slurry: 1.000 pcs (distributed in Lampung & South Sulawesi)



Warta BIRU Vol. 4 - Newsletter: 2.000 pcs (distributed in 10 provinces)



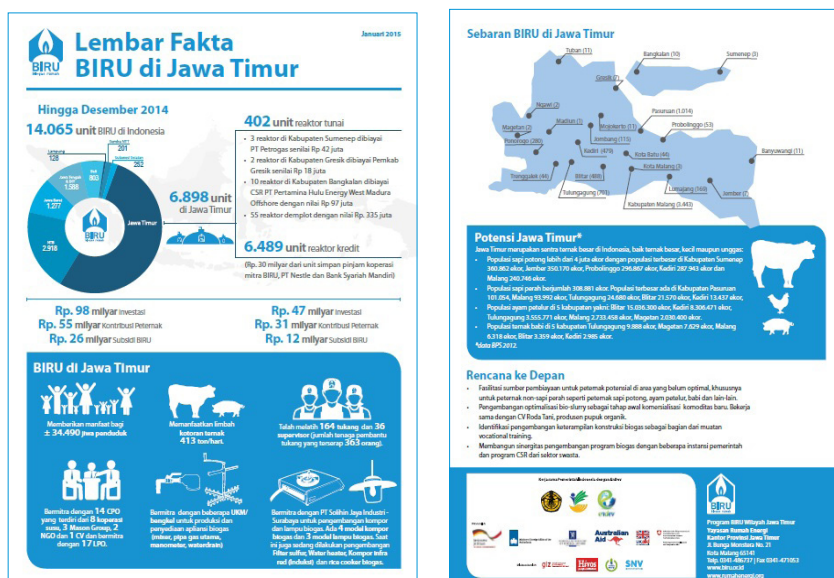
BIRU T-Shirt: 60 pcs (distributed in Central Java)



Banner Stakeholder Meeting Lampung: 1 pcs distributed in Lampung



Sticker Vinyl #PooPower – Sumba: 1 pcs distributed in Sumba



Factsheet of BIRU in East Java: (print on demand)

BIRU Hat: 50 pcs
Distributed in 9 provinces

Annex 3: List of Construction Partners

No	Name Of Construction Partners	Province
SME		
1	Abadi Mason Group	Bali
2	Dewata Mason Group	Bali
3	CV. Mitra Artha Utama (Mitra Sehati)	West Java
4	CV. Jaya Perkasa Utama	West Java
5	Pinbuk Banten	West Java
6	Boyolali Mason Group	Central Java
7	CV. Sarana Sejahtera	Central Java
8	LKM Rukun Makmur	Central Java
9	Pinbuk	Central Java
10	Qariyah Thayyibah	Central Java
11	CV. Bina Energi Mandiri Persada	Central Java
12	CV. H&B Putra Mandiri	Central Java
13	KTM Malang	East Java
14	Langit Biru Mason Group	East Java
15	Sumber Makmur Mason Group	East Java
16	Persada Mason Group	East Java
17	CV. Fitria Jaya Abadi	Lampung
18	Regol Mason Group	Lampung
19	Harapan Bersama Mason Group	Lampung
20	UD. Bontomaranmu	South Sulawesi
21	Mitra Sarana Kuba Mg	South Sulawesi
22	CV. Ritma Green Sinergy	South Sulawesi
23	Mandiri Mason Group	South Sulawesi
24	Mabarakka Mason Group	South Sulawesi
25	CV. Pratama Butiti Jaya	South Sulawesi
26	CV. Nur Indah Karya	South Sulawesi
27	Mason Group Sangkareang	NTB
28	Mason Group Paroso	NTB
29	CV. Joy	NTT
NGO		
30	Idep Selaras Alam	Bali
31	Yayasan Manikaya Kauci	Bali
32	Yayasan Kontak Indonesia	West Java
33	LPTP	Central Java
34	Yayasan Sion	Central Java
35	Yayasan Suara Bhakti	Central Java
36	Yayasan Trukajaya	Central Java
37	LSPI At-Tayseer	Central Java
38	LPKP	East Java
39	LPPAB	East Java
40	Yayasan Lembaga Pembinaan Masyarakat Desa (Ylpmdd)	Lampung
41	Lembaga Pengembangan Pertanian (Lpp) - Nu	Lampung
42	Pusat Studi Pembangunan	NTB

No	Name Of Construction Partners	Province
43	Yayasan Pilah	NTB
44	YM3S	NTB
45	YSLPP	NTB
46	Yayasan Alam Lestari	Sumba (NTT)
47	Yayasan Foremba	Sumba (NTT)
48	Lembaga Sosial Waimaringi	Sumba (NTT)
49	Yayasan Harapan Sumba	Sumba (NTT)
50	Yayasan Satu Visi	Sumba (NTT)
COOPERATIVE		
51	KUD Puspa Mekar	West Java
52	KPGS	West Java
53	Koperasi Andini Luhur	Central Java
54	KAN Jabung	East Java
55	KUD Semen	East Java
56	KUD Tani Makmur	East Java
57	KUD Tani Wilis	East Java
58	SAE Pujon	East Java
59	Setia Kawan	East Java
60	Sri Wigati	East Java
61	Sumber Makmur Ngantang	East Java
62	KSU Bulu Saukang	South Sulawesi
63	KPRI Prisma	NTB
64	Koperasi Jasa Peduli Kasih	Sumba (NTT)

Annex 4 List of Credit Providers

1. Nestlé Soft Loan

No.	Name of Credit Providers	Province
1	Koperasi SAE Pujon	East Java
2	KUD Sumber Makmur	East Java
3	KUB Sami Mandiri	East Java
4	KUD Jaya Abadi	East Java
5	KUD Tani Willis	East Java
6	KUD Sri Wigati	East Java
7	LPKP	East Java

2. Rabobank Foundation (RBF) Soft Loan

No.	Name of Credit Providers	Province
8	KPSBU	West Java
9	KUD Puspa Mekar	West Java
10	KPGS	West java
11	KSU Andini Luhur	Central Java
12	KSP Tekun	Central Java
13	KUD Ngudi Luhur	Central Java
14	KSP Bal'ota	South Sulawesi

3. Kiva Biogas Loan

No.	Name of Credit Providers	Province
15	LKM Rukun Makmur	Central Java
16	Yayasan At Tayseer	Central Java
17	KSU Bulu Saukang	South Sulawesi
18	LPPNU	Lampung
19	YM3S	Nusa Tenggara Barat
20	MG Paroso	Nusa Tenggara Barat
21	CV. BEM Persada	Jogjakarta

4. Others

No.	Name of Credit Providers	Province
22	Yayasan Trukajaya	Central Java
23	Yayasan Sion	Central Java
24	Koperasi Agro Niaga	East Java

Annex 5 List of IDBP Working Areas (Districts and Subdistricts)

Province	District/city	Year	Sub-district	Total District	Tot SD
				2010-2015	
East Java	Kabupaten Malang	2010	Pujon, Ngantang, Jabung, Kasembon, Dau, Karangploso, Wagir, Singosari	1	8
		2011	Poncokusumo, Bantur, Gondonglegi, Pakis, Medowo, Lawang, Wonoagung	0	7
		2012	Bayem, Pait, Pondok Agung, Blimbing, Tumpang, Sukosari, Turen	0	7
		2013	Pagelaran, Kedung Kandang, Wajak	0	3
		2014	Sumber Manjing Wetan, Sumber Puncung	0	2
	Kediri	2010	Kandangan, Kepung, Puncu, Pagu, Wates, Ngancar	1	6
		2011	Plosoklaten, Gurah, Kandat	0	3
		2012	Medowo, Mlancu, Segaran	0	3
		2015	Mojoagung	0	1
	Jombang	2011	Wonosalam, wulung, Bareng	1	3
		2012	Galengdowo	0	1
	Blitar	2010	Gandusari	1	1
		2011	Semen, Wlingi	0	2
		2012	Sanan Kulon	0	1
		2013	Kanigoro, Talun, Srengat, Garum, Doko, Ponggok	0	5
		2014	Wonodadi, Sukorejo	0	2
		2015	Kademangan, Udanawu	0	2
	Pasuruan	2010	Tutur, Purwodadi, Puspo	1	3
		2011	Grati, Blarang, Lumbang, Nongkojajar, Tlogosari, Wonosari, Nguling, Lekok	0	8
		2012	Ngembal	0	1
		2013	Pasrepan	0	1
	Mojokerto	2011	Pacet	1	1
		2013	Trawas	0	1
	Tulungagung	2011	Ngunut, Sendang, Pagerwojo, Kedung waru, Rejotangan, Sumber Gempol	1	6
		2014	Karangrejo, Pucang Laban	0	2
	Kota Batu	2011	Junrejo	1	1
		2014	Bumiaji	0	1
	Probolinggo	2011	Krucil	1	1
	Trenggalek	2011	Bendungan, Pule, Kelutan	1	3
		2015	Suruh	0	1
	Lumajang	2010	Senduro	1	1
		2011	Tempeh, Kunir, Kandang tepus, Kedung jajang	0	4
		2013	Sukodono, Padangan, Rowokangkung	0	3
		2014	Tekung	0	1
	Jember	2011	Ambulu	1	1
		2015	Gumuk Mas, Tanggul, Tempurejo, Tempursari, Puger, Wuluhan	0	6

Province	District/city	Year	Sub-district	Total District	Tot SD
				2010-2015	
	Ngawi	2011	Bringin, Geneng, Pitu, Ngawi, Ngrambe	1	5
		2014	Sine	0	1
	Ponorogo	2011	Pudakwetan, Sooko	1	2
		2012	Kauman, Krisik, Pulung, Ponorogo, Siman, Jambon	0	6
		2013	Ngrayun, Balong, Sukorejo, Slahung	0	4
		2014	Badegan, Mlarak	0	2
	Magetan	2011	Bulugunung, Panean	1	2
	Madiun	2013	Dolopo	1	1
	Banyuwangi	2013	Bangurejo, Siliragung	1	2
	Sumenep	2013	Ganding	1	1
Total East Java				18	129
Central Java	Sragen	2010	Kedawung, Plupuh	1	2
		2011	Gemolong, Sambirejo, Sragen	0	3
		2012	Ngrampal, Miri	0	2
		2013	Sambung Macan, Karang Malang	0	2
		2014	Masaran, Gondang	0	2
	Wonogiri	2010	Wonogiri, Ngadirojo	1	2
		2011	Giriwolyo	0	1
		2012	Nguntoronadi, Tirtomoyo	0	2
		2013	Baturetno, Batuwarno, Jatipurno, Puhpelem	0	4
	Banjar negara	2011	Bawang, Pejaweran, Manadadi	1	3
		2013	Mandiraja	0	1
	Karanganyar	2011	Jumantono, Jatipuro, Jatiyoso, Tawangmangu, Matesi, Sambat	1	6
		2012	Mojogedang, Lempong, Jaten, Jenawi, Ngargoyoso, Jumapolo	0	6
		2013	Kerjo, Bolong	0	2
		2014	Tasikmadu, Gondangrejo	0	2
	Sukoharjo	2010	Nguter	1	1
		2011	Gatak, Bendosari, Palokarto, Tawang Sari	0	4
	Grobogan	2011	Purwodadi, Wirosari	1	2
		2012	Krajan	0	1
	Wonosobo	2010	Selomerto	1	1
		2011	Kepil	0	1
		2012	Wadaslintang	0	1
		2015	Mojotengah	0	1
	Klaten	2011	Cawas, Kemalangan, Bayat, Jogonayan, Karanganom	1	5
		2012	Jogonalan, Kalikotes, kebon arum, Kebon dalem, Kemalang, Manisrenggo, Polanharjo, Prambanan, Trucuk, Tulung, Balerejo, Delanggu	0	12
		2013	Karangdowo	0	1
		2014	Karangnongko	0	1
		2015	Besaran	0	1

Province	District/city	Year	Sub-district	Total District	Tot SD
				2010-2015	
	Boyolali	2010	Mojosongo, Teras, Selo	1	3
		2011	Karanggede, Sambu, Simo, Musuk, Ampel, Klego	0	6
		2012	Andong, Bendungan, Cepogo, Angsuk, Kemusu, Lencohkelo	0	6
		2013	Banyudono	0	1
		2014	Sidomulyo	0	1
		2015	Nogosari	0	1
	Magelang	2011	Dukun	0	2
		2012	Salam, Srumbung, Ngablak, Sawangan	0	4
		2013	Borobudur, Grabak	0	2
		2015	Muntilan, Pakis	0	2
	Temanggung	2010	Temanggung, Kaloran	1	2
		2013	Tlogomulyo, Kranggan, Parakan	0	3
		2014	Bulu	0	1
		2015	Pringsurat, Gemawang	0	2
	Kabupaten Semarang	2010	Tengaran, Suruh, Ungaran, Sumowono, Gunung pati, Getasan, Pabelan, Bergas, Tembalang, Susukan	1	10
		2011	Plupuh, Ungaran Barat, Banyubiru, Kaliwungu	0	4
		2012	Bancak	0	1
		2013	Kedung Mungdu, Tuntang, Bandungan, Bawen	0	4
	Salatiga	2010	Argomulyo	1	1
		2011	Sidorejo	0	1
		2012	Tingkir	0	1
		2014	Sidomukti	0	1
	Blora	2011	Japah	1	1
		2012	Sambong	0	1
		2013	Ngawen	0	1
	Banyumas	2011	Sokaraja	1	1
	Gunung Kidul	2011	Nglipar	1	1
		2012	Panggang, Sapto Sari	0	1
		2013	Ponjong, Wonosari	0	2
		2015	Playen, Semin, Gedang Sari	0	3
	Jepara	2011	Keling	1	1
		2012	Mlonggo, Pakisaji, Pecangaan, Tahunan, Mantingan	0	5
		2013	Mayong	0	1
	Batang	2011	Subah, Tersono	1	2
	Rembang	2012	Rembang	1	1
		2013	Lasem, Pamotan, Sedan, Gunem	0	4
		2015	Kragan, Sulang	0	2
	Kendal	2011	Bojo	1	1
		2013	Singorojo	0	10

Province	District/city	Year	Sub-district	Total District	Tot SD
				2010-2015	
	Pati	2012	Gabus, Jakenan	1	1
		2013	Tayu	0	1
		2014	Wedarijaksa	0	1
		2015	Tambakromo, Donorejo, Margoyoso, Juwana	0	4
	Pemalang	2012	Pemalang	1	1
	Kudus	2015	Gebog	1	1
	Kebumen	2015	Kebumen, Poncowarno	1	1
	Brebes	2012	Paguyangan	1	1
Yogyakarta	Bantul	2010	Pundong, Bambanglipuro, Jetis, Srandakan,	1	4
		2011	Pleret	1	1
		2012	Kretek, Piyungan, Banguntapan, Pandak, Pundong, Sedayu, Sewon	0	7
		2013	Dlingo, Sanden, Imogiri	0	3
		2015	Pajangan	0	1
	Sleman	2010	Cangkringan	1	1
		2011	Sawangan, Ngluwar, Candi Mulyo	0	3
		2013	Turi, Ngemplak, Berbah, Tempel, Moyudan, Ngaglik	0	6
		2014	Pakem	0	1
		2015	Mlati, Minggir, Moyudan	0	3
	Kulon Progo	2012	Galur, Kokap	1	2
		2013	Kalibawang, Lendah	0	2
		2015	Sentolo	0	1
Total Centra Java/Yogya				28	215
West Java	Kabupaten Bandung	2010	Pangalengan	1	1
		2011	Kertasari, Pacet, Arjasari, Ciwidey, Pasirjambu, Majalaya	0	6
		2012	Soreang	0	1
		2014	Cileunyi, Cilengkrang, Cimeunyan	0	3
	Cianjur	2011	Gekbrong, Cipanas	0	3
	Sukabumi	2011	Cicurug, Sukaraja, Cibodas	1	3
		2012	Purabaya	0	1
		2013	Sukalarang, Cikembar	0	2
		2014	Nyalindung, Surade	0	2
	Bandung Barat	2010	Lembang, Cisarua	1	2
		2012	Parongpong	0	1
		2014	Ngamprah		
	Garut	2010	Bayongbong, Cigedug, Bluburlimbangan, Cisurupan	1	4
		2011	Cikajang	0	1
		2012	Tarogong kaler, Selawi, Pamengpeuk, Karangpawitan	0	4
		2013	Cihurip, Banjarwangi	0	2
		2014	Cikancung	0	2
	Subang	2011	Ciater, Sagalaherang, Jalancagak	1	4
		2013	Ciasem	0	1

Province	District/city	Year	Sub-district	Total District	Tot SD
				2010-2015	
	Sumedang	2010	Tanjungsari	1	1
		2011	Pamulihan, Sukasari, Tandangsari, Jatinangor, Darmaraja, Parakamuncang, Cimanggung	0	7
	Purwakarta	2011	Bungursari	1	1
		2014	Cibatu, Wanayasa, Manis	0	3
	Bogor	2011	Nanggung, Cisarua, Megamendung	1	3
		2012	Bojong Gede	0	1
	Kota Bandung	2011	Dago, Puncrut	1	2
	Indramayu	2011	Sliyeg	1	1
		2012	Sindeng	0	1
		2014	Arjasari	0	1
	Kuningan	2011	Cigugur	1	1
		2014	Maleber	0	1
	Cirebon	2011	Talun	1	1
		2012	Gempol	0	1
	Tasikmalaya	2012	Karangnunggal	1	1
	Bekasi	2013	BojongManggu, Tambun Selatan	1	2
		2014	Jati Sampurna	0	1
	Pangandaran	2015	Padaherang	1	1
Banten	Pandeglang	2011	Citeureup	1	1
		2012	Bojong, Koroncong, Carita, Panimbang	0	4
	Serang	2013	Waringin kurung	1	1
	Lebak	2015	Cibadak, Warung Gunung	1	2
	Tangerang	2012	Jambe	1	1
DKI Jakarta	Jakarta Selatan	2012	Pancoran, Mampang Prapatan, Cikoko	1	3
W Java (and Banten)				20	85
South Sulawesi	Enrekang	2011	Cendana, Maiwa, Enrekang, Anggeraja, Baraka, Buntu batu, Malua, Alla, Curio, Baroko, Masalle	1	11
	Sinjai	2011	Sinjai Selatan	1	1
		2012	Sinjai Timur, Tellu Limpoe, Sinjai Barat, Sinjai Tengah	0	4
		2015	Sinjai Utara	0	1
	Bone	2011	Bengo, Sua Baccoe	1	2
		2012	Kahu, Patimpeng	0	1
		2013	Amali, Tonra, Lamuru, Lappariaja	0	4
		2014	Barebbo, Awangpone	0	2
		2015	Tanete Riattang, Tellu Siattinge	0	2
	Maros	2012	Simbang	1	1
		2013	Tompobulu	0	1
		2014	Tanralli	0	1

Province	District/city	Year	Sub-district	Total District	Tot SD
				2010-2015	
	Takalar	2012	Galesong Selatan	1	1
		2013	Polombangkeng Selatan, Polombangkeng Utara, Mappakasunggu	0	3
	Tana Toraja	2013	Makale Utara, Saogalla Selatan	1	2
	Bulukumba	2013	Bulukumpa, Gantarang, Kajang	1	3
		2015	Bontotiro	0	1
	Gowa	2013	Bontonompo	1	1
		2015	Bontoramba	0	1
	Jeneponto	2013	Bangkala	1	1
	Wajo	2013	Gilireng	1	1
		2015	Takkalalla, Penrang	0	2
	Soppeng	2013	Mario Riawa, Donri-donri, Lalabata	1	3
	Barru	2013	Barru	1	1
		2015	Tanete Riaja	0	1
	Pangkajene Kepulauan	2015	Balocci, Mandalle, Labakkang, Ma'Rang, Tondong Tallasa	1	5
Total South Sulawesi				13	57
Nusa Tenggara Barat	Lombok Tengah	2010	Pujut	1	1
		2012	Batukliang, Jonggat, Kopang, Praya Barat, Pringgarata, Janapria, Praya Timur	0	7
		2014	Batukliang Utara	0	1
	Lombok Barat	2010	Gerung, Narmada	1	2
		2011	Sekotong, Lembar, Gunungsari, Lingsar, Batulayar	0	5
		2012	Labu api, Gunungsari, Lingsar, Sekotong, Senteluk	0	5
		2014	Kediri	0	1
	Lombok Utara	2011	Tanjung, Pemenang, Gondang	1	3
		2012	Bayan, Gangga, Kayangan	0	3
	Lombok Timur	2010	Suralaga, Labuhan Haji	1	3
		2011	Aikmel, Wanasaba, Sikur, Montong Gading	0	5
		2012	Pringgabaya, Pringgasela, Keruank, Jeruklegi, Selong, Wanasaba, Kota Raja	0	7
		2013	Masbagik, Terara	0	2
		2014	Kelayu	0	1
		2015	Sambelia	0	1
	Mataram	2012	Mataram	1	1
		2013	Sanubaya	0	1
	Sumbawa	2012	Moyohilir, Moyo Utara, Tarano	1	3
		2013	Labuhan Badas, Maronge, Lopok, Smapuin	0	4
	Sumbawa Barat	2012	Seteluk	1	1
		2013	Pototano	0	1
		2014	Brang Ene, Brang Rea, Jereweh, Maluku, Taliwang, Rempe	0	5
	Kota Bima	2013	Bima, Soromandi, Rasanae	1	3
		2014	Palibelo, Bolo	0	2
	Dompu	2013	Dompu, Kramat Mulya	1	2

Province	District/city	Year	Sub-district	Total District	Tot SD	
				2010-2015		
Bali	Gianyar	2010	Payangan	1	1	
		2011	Ubud, Tegalalang	0	2	
		2012	Blahbatuh, Tegal Kolong	0	2	
		2013	Tampak Siring, Sukawati	0	2	
	Kab.Bangli	2010	Tembuku	1	1	
		2011	Susut, Bangli, Kintamani	0	3	
		2012	Sawan	0	1	
	Badung	2011	Abiansemal, Petang, Mengwi, Kertabuana	1	1	
		2012	Kuta Utara, Abiansemal	0	2	
		2013	Kuta Selatan	0	1	
	Tabanan	2011	Selemadeg, Kerambitan, Baturiti	1	3	
		2012	Penebel	0	1	
		2013	Kediri, Slemadeg Timur	0	2	
		2014	Marga	0	1	
	Klungkung	2011	Klungkung, Banjarangkan, Dawan, Tagak	1	4	
		2013	Banjaranekan	0	1	
	Buleleng	2010	Tejakula, Gerokgak	1	2	
		2012	Sukasadaya, Banjar	0	2	
		2013	Kubu Tambahan, Seririt	0	2	
	Denpasar	2011	Denpasar Selatan	1	1	
		2012	Denpasar Utara	0	1	
	Jembrana	2011	Melaya	1	1	
		2012	Negara	0	1	
		2013	Mendoyo	0	1	
	Karang Asem	2011	Kubu, Bebandem	1	2	
		2012	Manggis, Karang asem, Rendang, Sidemen, Selat, Seraya	0	5	
		2014	Pempatan, Abang	0	2	
	Selayar	2011	Payangan	1	1	
	Total Lombok and Bali				19	119
	Sumba (NTT)	Sumba Barat Daya	2011	Wewewa Timur, Kodi	1	2
2012			Weetabula, Loura, Wewewa Barat	0	3	
2013			Tambolaka	0	1	
2015			Kodi Utara	0	1	
Sumba Timur		2011	Kambera, Waingapu, Pandawai	1	3	
		2012	Kanatang, Lewa	0	2	
		2013	Nggaha Ori Angu, Wulu Waijelu	0	2	
		2014	Pinu Pahar, Kahangu Eti	0	2	
		2015	Umalulu	0	1	
Sumba Tengah		2012	Katikutana	1	1	
	2014	U Ratu Nggai Barat	0	1		
	Sumba Barat	2012	Kota Waikabubak	1	1	
		2014	Tana Riu	0	1	
Total Sumba (NTT)				4	21	

Province	District/city	Year	Sub-district	Total District	Tot SD
				2010-2015	
Lampung	Pesawaran	2012	Padang Cermin	1	1
		2013	Gedong Tataan	0	1
	Tulang Bawang	2013	Tulang Bawang Tengah	1	1
	Lampung Tengah	2013	Pubian, Selagai Lingga, Sendang Agung, Seputih Banyak, Trimurjo, Kota Gajah, Seputih Raman	1	7
		2014	Seputih Agung, Terusan Nunyai	0	1
		2015	Way Pengubuan, Kalirejo, Gunung Sugih, Bekri	0	4
	Kota Metro	2013	Metro Utara, Metro Timur, Metro Selatan	1	3
	Lampung Timur	2013	Batang Hari, Way Jepara, Pasir Sakti, Braja Selebah, Raman Utara	1	5
		2014	Sekampung, Pekalongan	0	2
	Lampung Selatan	2013	Natar, Jati Agung	1	2
		2014	Sukabumi, Sidomulyo, Merbau Mataram	0	3
	Bandar Lampung	2014	Kemiling	1	1
	Pringsewu	2014	Adi Luwih, Gading Rejo	1	1
	Pesisir Barat	2014	Bengkunat	1	1
	Pagar Alam	2015	Dempo Tengah, Dempo Selatan	1	2
Total Lampung				10	35
Total number of districts and sub-districts 2009 - 2015				112	661

Annex 6. List of Joint Cooperation Hivos and Government of Indonesia for Biogas Digesters Construction

Period : Jan – June 2015

No	Name of MoU
1.	MoU Hivos with Provincial Energy Departments Ministry of Energy and Mineral Resources Lombok Utara 2015
2.	MoU Hivos with Provincial Energy Departments Ministry of Energy and Mineral Resources Kabupaten Barru Sulawesi Selatan 2015
3.	MoU Hivos with Provincial Energy Departments Ministry of Energy and Mineral Resources Kabupaten Wajo Sulawesi Selatan 2015
4.	MoU Hivos with Provincial Energy Departments Ministry of Energy and Mineral Resources Maros 2015
5.	MoU Hivos with Provincial Energy Departments Ministry of Energy and Mineral Resources Kabupaten Bantaeng Sulawesi Selatan 2015

Annex 7 List of Meetings and Workshops

Activity	Date	Place
External training and workshop participation		
EBT diskusi panel Universitas Indonesia	24 March 2015	Depok
Green building stimulation training	27 – 29 April 2015	Bandung
3 rd Global Bioenergy Partnership/ GBEP conference	25 – 29 May 2015	Medan
MCAI meeting	25 June 2015	Jambi
MCAI Workshop	10 June 2015	Jakarta
MCAI meeting	9 February 2015	Makassar
MUSREMBANG REGIONAL SULAWESI	5 March 2015	Makassar
MUSREMBANG Provinsi	30 March 2015	Makassar
National Seminar “ National Energy Implementation for National Energy Sustainability”	04 April 2015	Makassar
Workshop Penghargaan Energi	21 May 2015	EMR Central Java Province
External workshops organized		
Local Stakeholders Consultation Meeting for qualification of Gold Standard Agriculture	20 March 2015	Jakarta
Coordination meeting with Gol		
Meeting with Department Animal Husbandry Lampung Province	20 January , 2015	Lampung
Meeting with Meeting with Secretary of Energy and Mining Department	8 April, 2015	Lampung
Market Survey meeting with EBTKE	23 January 2015	Jakarta
Meeting with EBTKE PLTBm	26 January 2015	Waikabubak , NTT
Rakornas DAK Energi Pedesaan Berbasis Bioenergi	12 May 2015	Central Java
Lampung Stakeholders Meeting for IDBP Progress & Biogas Credit Potential 2015	9 June 2015	Bandar Lampung
Meeting with Head of PU, Tamben & Energi KLU	24 March 2015	Lombok
Stakeholder meeting	12 May 2015	Lombok Utara
Meeting with EMR South Sulawesi	29 April 2015	Jakarta
Meeting with Yayasan Kalla team	14 January 2015	Makassar
Stakeholder Meeting	19 May 2015	Makassar
MUSREMBANG Regional Sulawesi	05 March 2015	Makasar
Meeting with EMR Enrekang and Mabaraka Mason Group	08 January 2015	Makassar
Meeting and BIRU socialization with Head Division of Mining Bantaeng	22 January 2015	Makassar
Meeting with Head Section of Energy EMR Wajo	23 January 2015	Makassar
Meeting with Mining Head Divison Kabupaten Takalar and CPO UD. Bontomarannu	26 January 2015	Makassar
Meeting with EMR Maros	3 February 2015	Makassar
First coordination meeting with EMR Kabupaten Soppeng	05 February 2015	Makassar
Meeting with Energy Head Division EMR Enrekang and Mason Group Mabarakka	23 February 2015	Makassar

Activity	Date	Place
Coordination meeting with EMR Luwu Timur Head Division and Head of Environment Conservation of Electricity EMR Province	06 March 2015	Makassar
Coordination meeting with Wakil Bupati Luwu Utara, Camat Berau, Tim Dinas ESDM Kab. Luwu Timur (Sekretaris, Kasi Energi), Kasi Konservasi & Lingkungan Ketenagalistrikan Dinas ESDM Provinsi, PC Sulsel.	07 March 2015	Makassar
Coordination meeting awal with EMR Palopo and Head of Environment Conservation of Electricity EMR Province.	08 March 2015	Makassar
Coordination meeting with Head Division of EMR Selayar	13 March 2015	Makassar
Coordination Meeting with Head Divison of Animal Husbandry Kabupaten Selayar and EMR Province.	14 March 2015	Makassar
Coordination meeting with Section Head Energi Kelistrikan Kabupaten Wajo	20 March 2015	Makassar
Coordination meeting with BLHD Bidang Pertambangan Kota Parepare.	10 April 2015	Makassar
Coordination meeting with tim Dinas Pertambangan & Energi Kabupaten Soppeng bersama Kasi Konservasi & Lingkungan Ketenagalistrikan Dinas ESDM Provinsi di kantor Dinas Pertambangan & Energi Kabupaten Soppeng dilanjutkan dengan verifikasi lapangan & calon penerima bantuan biogas.	11 April 2015	Makassar
Meeting with EMR Kabupaten Maros	13 April 2015	Makassar
Coordination meeting with Kabid Energi Dinas ESDM Wajo di Mall Panakukang Makassar	30 April 2015	Makassar
Coordination meeting with Kepala Dinas ESDM Kab. Jeneponto bersama dengan Kabid Energi di ruang kerja Kepala Dinas ESDM Jeneponto	12 May 2015	Makassar
Technical Meeting ERM Kab. Bantaeng	12 May 2005	Makassar
Coordination Meeting with Bupati Bantaeng	14 May 2015	Makassar
Stakeholder Meeting in BLHD Provinsi Sulsel	19 May 2015	Makassar
Coordination meeting with Head Division of ERM Luwu Timur	10 June 2015	Makassar
Coordination meeting with Section Head of ERM Wajo	13 June 2015	Makassar
Meeting koordinasi with ERM Kab	29 June 2015	Makassar
Coordination meeting with EMR Department Solo	6 February 2015	Central Java
Coordination meeting with EMR Blora	3 March 2015	Central Java
Coordination Meeting with EMR Solo	31 March 2015	Central Java
Coordination Meeting with EMR DIY	13 April	Central Java
Coordination Meeting with Bappeda Bantul	14 April 2015	Central Java
Stakeholder meeting Central Java provinsi Jawa Tengah di kantor Balai ESDM, Solo.	23 April 2015	Central Java
Coordination meeting with EMR DIY	24 April 2015	Central Java
RAKORNAS DAK Energi Terbarukan di BAPPEDA, Yogya.	12 Mei 2015	Central Java
Kiva Coordination Meeting:		
Kiva Loan Socialization Meeting to all Lampung CPOs at YRE Lampung Provincial Offices	February 2015	Lampung
Lampung Potential Credit Financing at Local Stakeholders Coordination Meeting, Lampung Provincial ESDM Office	June 2015	Lampung

Activity	Date	Place
Kiva Loan Coordination Meeting with YRE Central Java/Jogjakarta Team at YRE Central Java / Jogjakarta Office	February 2015	Klaten
Kiva Loan Coordination Meeting with LKM "Rukun Makmur" at LKM office	May 2015	Karanganyar
Kiva Loan Socialization Meeting to Yayasan "At-Tayseer" at Yayasan "At-Tayseer" Office	May 2015	Rembang
Kiva Loan Socialization Meeting to CV. BEM Persada at Instiper	February 2015	Jogjakarta
Kiva Loan Socialization Meeting to PINBUK Jogjakarta at PINBUK Office	February 2015	Jogjakarta
Kiva Loan Coordination Meeting with YM3S at YM3S Office	April 2015	East Lombok
Kiva Loan Coordination Meeting with Kiva "Lembah Rinjani Group" at "Lembah Rinjani" Group Coordinator Residence, Bangle	April 2015	East Lombok
Kiva Loan Socialization Meeting to potential Kiva borrowers, the "Santih Pelangi" and "Sekar Pelangi" Groups at Lunyuk Village Hall	April 2015	Sumbawa Besar
Kiva Loan Socialization Meeting to KSP "Sunari Jaya" (potential LPO), "Dewata" MG and "Abadi" MG at KSP "Sunari Jaya" Office	March 2015	Klungkung
Kiva Loan Socialization Meeting to KSU "Karya Nadhi" (potential LPO) and Yayasan "Manikaya Kauci" at KSU "Karya Nadhi" Office	March 2015	Ubud
Kiva Loan Socialization Meeting to IDEP at YRE Bali Provincial Office	March 2015	Gianyar

**A Cooperation of the Government of Indonesia and EnDev
and the Government of Indonesia and the Royal Norwegian Embassy**



Funded by:



Ministry of Foreign Affairs of the
Netherlands



Implemented by:



**National Biogas Programme Support Office
Indonesia Domestic Biogas Programme**

Yayasan Rumah Energi (YRE)

Jl. Ampera IV Gg. H. Rais No. 1 Jakarta 12550 Indonesia

Phone. +6221 7821086/7821090 | Fax. +6221 7806746

E-mail: info@rumahenergi.org

www.biru.or.id | www.rumahenergi.org